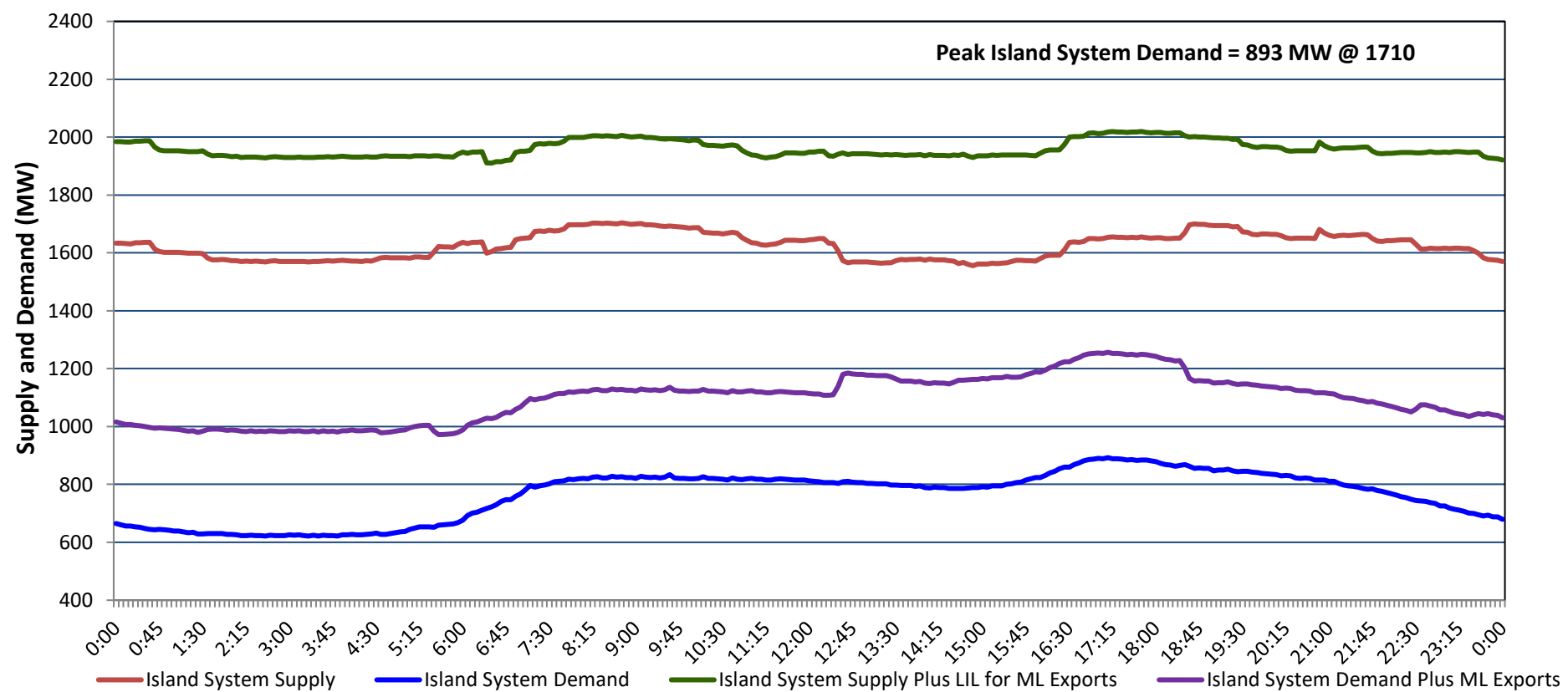


Newfoundland Labrador Hydro (NLH) Supply and Demand Status Report Filed Wednesday, November 20, 2024

Section 1 Island Interconnected System - Supply, Demand & Exports Actual 24 Hour System Performance For Tuesday, November 19, 2024



Island Supply Notes For November 19, 2024 ¹

- A As of 0000 hours, October 20, 2024, Holyrood Unit 1 unavailable due to forced extension to planned outage (170 MW).
- B As of 0700 hours, November 10, 2024, Holyrood Gas Turbine unavailable due to planned outage (123.5 MW).
- C As of 1755 hours, November 17, 2024, Bay d'Espoir Unit 7 unavailable due to planned outage (154.4 MW).
- D At 0623 hours, November 19, 2024, Granite Canal Unit unavailable due to planned outage (40 MW).
- E At 2048 hours, November 19, 2024, Granite Canal Unit available (40 MW).

Section 2 Island Interconnected System - Supply, Demand & Outlook

Wed, Nov 20, 2024	Island System Outlook ²	Seven-Day Forecast	Island System Daily Peak Demand (MW)	
			Forecast ⁸	Adjusted ⁶
Island System Supply: ⁴	1,799 MW	Wednesday, November 20, 2024	980	910
NLH Island Generation: ^{3,7}	1,245 MW	Thursday, November 21, 2024	955	875
NLH Island Power Purchases: ⁵	125 MW	Friday, November 22, 2024	1,030	950
NP and CBPP Owned Generation:	205 MW	Saturday, November 23, 2024	1,125	1,045
LIL/ML Net Imports to Island: ⁹	224 MW	Sunday, November 24, 2024	1,060	980
		Monday, November 25, 2024	1,140	1,060
7-Day Island Peak Demand Forecast:	1,170 MW	Tuesday, November 26, 2024	1,170	1,090

Island Supply Notes For November 20, 2024

- Notes:
1. Generation outages for running and corrective maintenance are included. These are not unusual for power system operations. They generally do not impact customer supply. Hydro schedules outages to system equipment whenever possible to coincide with periods when customer demands are low and sufficient supply reserves are available. However, from time to time equipment outages are necessary and reserves may be impacted.
 2. As of 0800 Hours.
 3. Gross continuous unit output.
 4. Gross output from all Island sources (including Note 4).
 5. NLH Island Power Purchases include: ML Imports, Exploits Generation, Rattle Brook, Star Lake, Wind Generation and capacity assistance (when applicable).
 6. Adjusted for interruptible load and the impact of voltage reduction when applicable.
 7. Due to limitations inherent in the design of combustion turbines, the output of combustion turbines may be reduced in the event that ambient temperatures exceed the threshold required for full rated output. This threshold is dependent on the design of each turbine.
 8. Does not include ML Exports.
 9. LIL Import sunk in the Island System. Actual LIL flows will be restricted by various system conditions including, but not limited to, Island Load, ML Exports and Avalon Unit status.

Section 3 Island Peak Demand and Exports Information Previous Day Actual Peak and Current Day Forecast Peak

Tue, Nov 19, 2024	Island Peak Demand ¹⁰	17:10	893 MW
	Exports at Peak		364 MW
	LIL Net Imports to Island		3,366 MWh
Wed, Nov 20, 2024	Forecast Island Peak Demand		980 MW

- Notes: 10. Island Demand is supplied by NLH generation and purchases, LIL Imports plus generation owned and operated by Newfoundland Power and Corner Brook Pulp & Paper (Deer Lake Power, DLP).